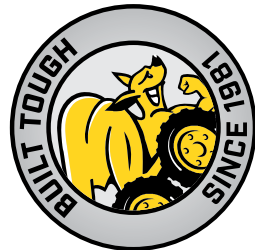
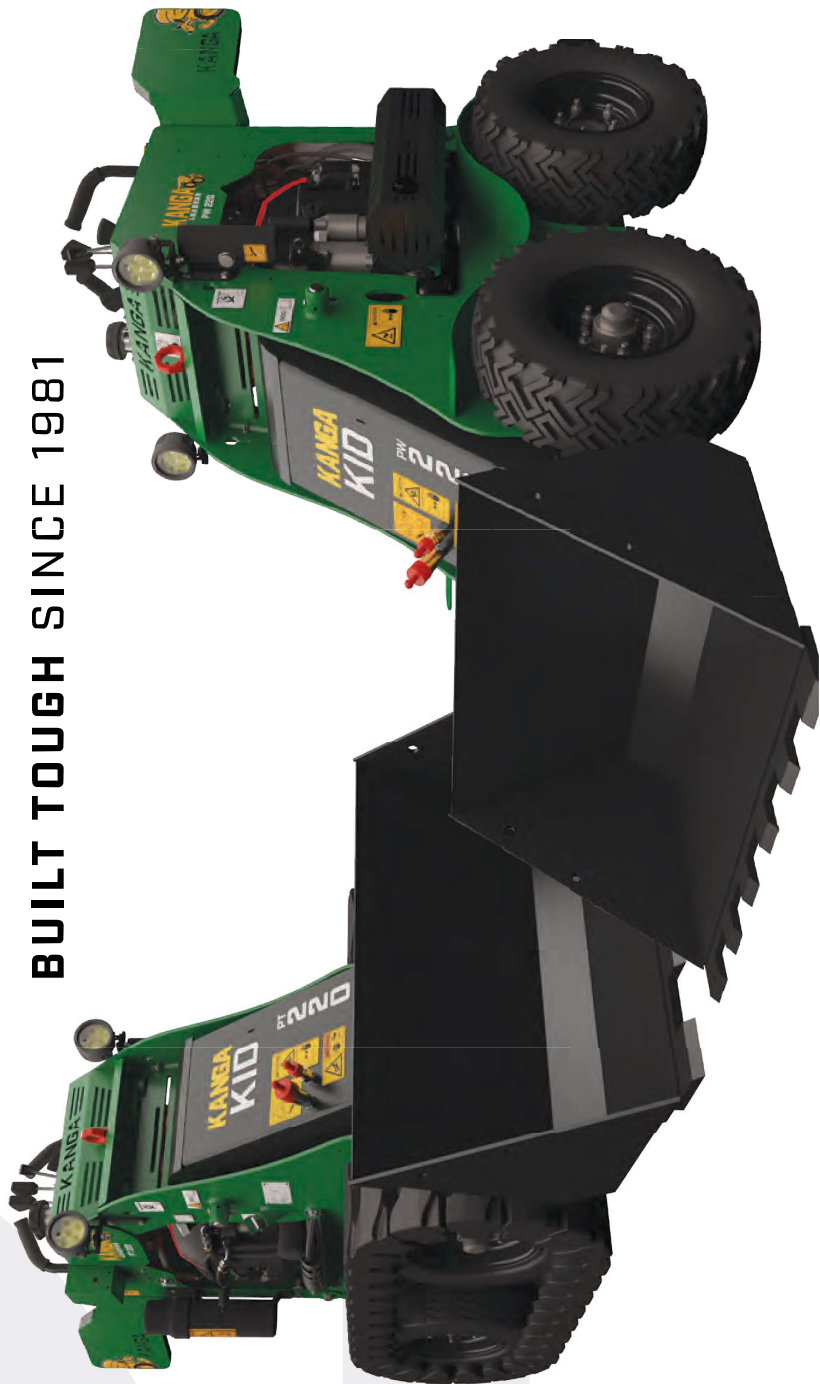




PM-000260
24V4

KANGA LOADERS

BUILT TOUGH SINCE 1981



MULTI-TASK COMPACT SKID STEER LOADER

PT220 / PW220

SELF-LEVELLING BUCKET STANDARD FEATURE

Makes it impossible for the load to tip onto the operator or the machine.

IMPROVED SOFT-TOUCH CONTROLS

- Smooth to drive.
- Improved operator ergonomics.
- Improved safety, with safety cut-out switch if no operator is present.

PERFECTLY BALANCED

Superior design enables the loader to remain balanced either fully loaded, or with attachment removed.

LED HEADLIGHTS

Included as a standard accessory.

LONG-LIFE LINKAGE PINS

Greasable pins ensure extended cycle life of pins and bushes.

FULL FLOW AUXILIARY

Hydraulic power outlet.

QUICK-HITCH

Change attachments in a matter of seconds.

OPERATOR CAPSULE

Cushioned to maintain operator comfort and safety.

AVAILABLE IN BOTH WHEEL & TRACK WITH OVER 6" OF GROUND CLEARANCE

Choice of heavy duty tracks or wheels.

LARGE NON-SLIP OPERATOR PLATFORM

Wide stance for improved safety and fatigue reduction. Rubber mounted platform reduces vibrations for better comfort.

SAFE, USER-FRIENDLY OPERATION AND PEACE OF MIND

Since inventing the mini loader in 1981, Kanga has continued to lead the industry in **safety, innovation, and performance**. Kanga Loaders adheres to Occupational Health & Safety government guidelines, and operates under World's Best Practices.



OPERATOR CAPSULE

NEW - Padded rear protection and operator stability extension.



NARROW ACCESS

With an overall width of 770mm (wheeled) / 800mm (tracked), you can access the worksite through side gates and standard doorways.



QUICK HITCH

Specially designed for the 2 Series Loader.



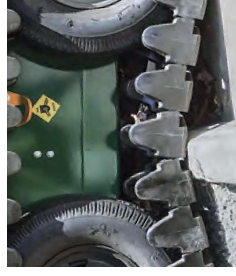
SAFETY RELIEF VALVE

The lift circuit is set at 1500psi to protect the operator from overloading the machine, and is located on the machine's rear, for ease of access.



AMPLE GROUND CLEARANCE WHILE MAINTAINING A LOW CENTER OF GRAVITY

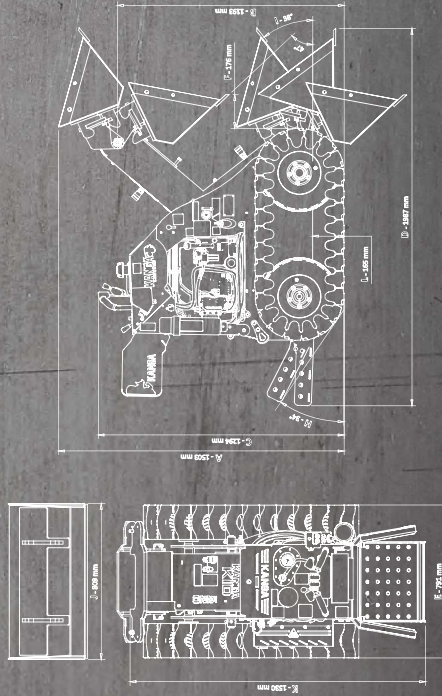
When the loader arms are lowered to rest on the frame, the bucket can be rolled back to carry a full load while maintaining ground clearance.



TRAVERSE OVER UNDULATING GROUND

Crawl over gutters and uneven terrain with confidence. Unlike other brands with fixed under-carriage track systems, Kanga's stable wrap-around tracked system will not pivot whilst traversing over undulating ground.

2 SERIES



The above graphics are intended for illustrative purposes only.

¹ Tipping load and Rated Operating Capacity (ROC) have been determined to ISO 14397-1, though the values shown here need to be adjusted for specific attachments. Refer to the section of the Operators Manual "Practice Safety at All Times" for Tipping Load and ROC values for the range of Kangat bucket and fork attachments. Note that ROC is 50% of the Tipping Load for wheel loaders and 45% for Kangat "over tire track" loaders.

² Machine Weight is calculated with no operator, using no bucket, full fuel tanks, and air-filled tires. Weight will differ depending on model and options.

³ Power Rating is the gross power of the production engine only as measured in accordance with SAE J1995 at 3600 RPM. Mass production engines vary from this value. Actual power output for the engine installed in the delivered machine may vary depending on numerous factors. These factors can include operation speed of the engine in the application, environmental conditions, and other variables.

⁴ Volumes based on ISO 7546:1983.

PERFORMANCE	TRACKS	WHEELS
Tipping Load ¹ (No Bucket)	PT220	PW220
Rated Operating Capacity (AOC) ¹ No Bucket	361kg	357kg
Maximum Travel Speed (Fast Mode)	162kg	178kg
Fuel Capacity (Petrol)	5.5kph	5.4kph
Loader Mass ²	11.6L	11.6L
ENGINE	472kg	444kg
Manufacturer	Honda GXV630 (Petrol)	Honda GXV630 (Petrol)
Rated Power ³	15.5kW @ 3600 RPM	15.5kW @ 3600 RPM
DRIVE SYSTEM		
Drive Control	Soft Touch Hand Levers - Rubber Mounted	Soft Touch Hand Levers - Rubber Mounted
Throttle Control	Hand Levers	Hand Levers
Wheels with Direct Drive Hydraulic Motor	Rear Wheels (x2)	Rear Wheels (x2)
Drive Tire Power Transfer	Front Track Drive	Front Chain Drive
HYDRAULICS		
Pump output	25.6L/min	25.6L/min
System Pressure	203 bar	203 bar
Hydraulic Reservoir Capacity	52.5L	51.5L
BUCKETS		
HD 4in1 Bucket Capacity (heaped / struck) ⁴	0.077m ³ / 0.059m ³	0.084m ³ / 0.069 m ³
DIMENSIONS		
A Max Operating Height	1503mm	1492mm
B Height to Hinge Pin	1193mm	1182mm
C Overall Height (No Warning Lights)	1294mm	1283mm
D Overall Length With 4in1 Bucket	1987mm	1987mm
E Overall Width	791mm	755mm
F Bucket Reach at 40° (4in1 Bucket)	176mm	187mm
H Angle of Departure	34°	34°
I Max Roll Back	38°	38°
J Bucket Width (4in1 Bucket)	809mm	809mm
K Overall Length Less Bucket	1530mm	1530mm
L Ground Clearance	165mm	154mm

SPECIFICATIONS

1978 The original idea which led to the world's first stand-on machine, was originally a motorised wheelbarrow.

1980 By 1980, the concept developed into a walk-behind machine with similar design and styling characteristics, found on modern machines.

1981 The first stand-on machine was introduced to the world. Named the Riga 1 Universal Loader, it was powered by an 11hp motor.

1984 The loaders were renamed the Jaden Loader. A larger sized model was released, named the Dingo 1000.

1985 The Jaden Maxi prototype was powered by a 16hp engine. Only 35 were ever made.

1986 Mk1 - A major chassis design revision was undertaken to increase power and improve poise & balance.

1988 Long range fuel tanks were added over the wheels. Power was increased to 16hp.

1989 3 Series - Optional 10" wheels, larger fuel tanks (which encapsulate the operator), and the iconic green colour were introduced. Received 'Australian International Design Award'.

1997 Kanga begins exports to North America and New Zealand.

1999 The 5 Series model saw an introduction to soft-touch controls, auxiliary cutout, and redesigned fuel tanks, in preparation for the introduction of tracks.

2000 The 2 Series was released, to align with the original concept of a tight access and affordable earthmoving solution.

2002 The Kid track mini loader was released, as the smallest tracked machine in the world.

2003 6 & 7 Series mini loaders were released. Originally named the Big Foot, due to its 12" wheels, available in a 24hp petrol, or 20hp Diesel engine. The Track machine was named Fat Track.

2006 A new 25hp 2-speed 8 Series loader, featuring an oil cooler, trenching valve, and auto quick-hitch release - The largest and most powerful in the range.

2007 6 & 7 Series upgraded to 4-wheel motors, a wider platform, and an increase of performance and comfort. Received 'Innovative Product of the Year' Award.

2008 Remote Loader commences development, and first prototype released.

2009 Kanga Loaders was acquired by Digga Australia. The manufacturing of loaders was moved into the Digga factory.

2010 The Kanga Warrior was released. A cost effective bare-bones model for the weekend warrior.

2011 The Kanga Remote Loader was released, with wheeled and track versions available.

KANGA LOADERS

MULTI-TASKING MADE EASY

Since being established in 1978 as Jaden Engineering, the Kanga loader has been a source of innovation for the multi-task compact skid steer market. Upholding the highest safety industry standards, starting with the original idea and prototype in 1980, Kanga later developed the first production model in 1981. Kanga Loaders has since become an Australian household name within the mini loader industry.

2013 The Kanga 8 Series range, featuring a 25hp diesel motor, was released. Available in wheeled and tracked versions.

2015 Kanga release the Kanga Klean program as an industry-first in emissions reduction.

2016 Kanga release the D1835 as the most powerful Kanga mini loader.

2017 Kanga Loaders launches in North America - USA.

2021 Kanga Loaders celebrates its 40th year anniversary.

2022 Logo and machine branding modernised.

2023 Kanga Kid redesign with increased HP.

GET THE BEST FROM YOUR KANGA WITH OPTIONAL ADD-ONS...

SAFETY & CUSTOMISATION ADD-ONS

- ▶ **Reverse Beeper.**
- ▶ **Horn** - often required for OH&S purposes.
- ▶ **Flashing Amber Beacon Light** - often required for OH&S purposes.
- ▶ **Emergency stop button** - shuts down the machine functions in the event of an emergency.
- ▶ **Back Protection Bars** - an extension of the safety cell used to encapsulate the operator when operating in confined spaces, protecting the rear of the machine from unnecessary damage.
- ▶ **Battery Isolator Switch** - non-lockable isolator.
- ▶ **Colour Customise** your machine to match the rest of your fleet, or corporate colours.



THE WORLD'S SMALLEST MINI LOADER

Fitted with a special range of Kanga attachments, you can complete the toughest jobs quickly and easily. With residential site access becoming increasingly smaller, the 2 Series is the popular choice among landscapers, pool installation, builders, contractors, plumbing, electrical contractors, and many more.

HONDA

- ✔ Fuel efficient operation
- ✔ High output performance
- ✔ Reliable

- ✔ Quiet
- ✔ Easy to start
- ✔ Easy to use & maintain

HONDA COMMERCIAL V-TWIN ENGINE

Honda is the world's largest engine manufacturer producing small engines since 1953. The GVX630 is a 4-stroke 2 cylinder engine with exceptional economy and cooling power. The 36 blade high capacity cooling fan coupled with race inspired connecting rods, integrated cylinder and head also aid in lowering vibrations and result in quieter operation.



KANGA LOADERS



TURNING HARD WORK INTO EASY BUSINESS SINCE 1981

- ✔ **AUSTRALIAN DESIGNED**
- ✔ **AUSTRALIAN OWNED**
- ✔ **AUSTRALIAN MADE**



PHONE 1300 4 KANGA
EMAIL info@kangaloader.com

WARRANTY



ENGINE
3 YEARS/UNLIMITED
Petrol machines

COMMERCIAL PRODUCT
5 YEARS
Chassis structure.

2 YEARS/1,000 HOURS
Arm/tilt assembly workmanship and structure.

1 YEAR
Other components and electrical.
Warranty Conditions Apply.

kangaloader.com